



# FARMVILLE

EST. 1798 | VIRGINIA

Blue Ridge Presbytery

Presbyterian Church in America

## Prince Edward County Statistics

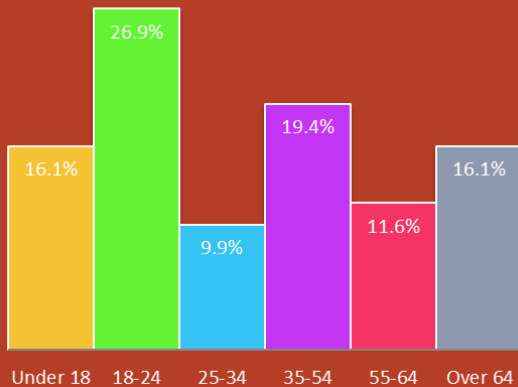
2019 Estimates, census.gov

### By the Numbers

Population:	22,905
Median household income:	\$47,202
Median home value:	\$159,700
Median Rent:	\$765
Poverty Rate:	20.6%
Crime Index (Farmville):	215.3
US Average is 274 (2018, city-data.com)	

### Age Demographics

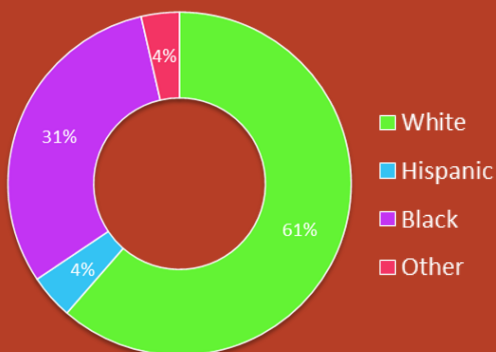
Median age: 31.5



### Family Type

Married-couple family	43%
Family, no wife present	2%
Family, no husband present	5%
Householder alone	46%
Cohabiting Couple Household	4%

### Racial Demographics



Farmville, Virginia straddles Prince Edward and Cumberland counties and reaches people from Buckingham, Amelia, and Nottoway counties. Farmville is home to both Longwood University and Hampden-Sydney College and is described as a distinctive place where college town vibe meets small town charm.

The area is generally culturally Christian/conservative but lacking the heart and life-changing Gospel message. The university has more typical progressive views which cause some tension in the surrounding area and a planter should expect to grapple with how to bring the Gospel to both groups simultaneously.

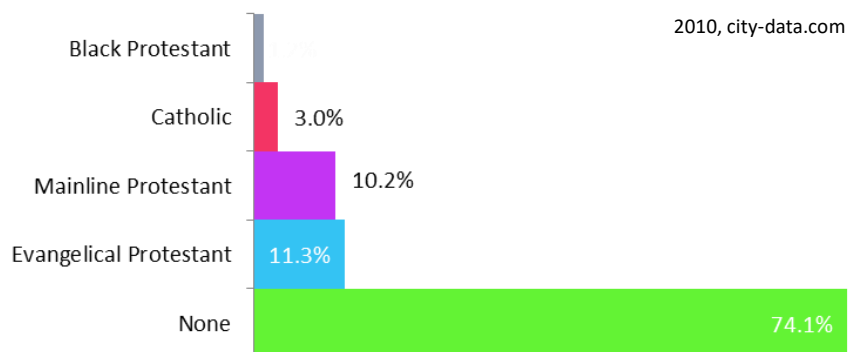


This is a plant without a sending church, however, there is a significant core group that has been meeting since January 2020. This group is made up of 8-10 families or singles (2-3 others have expressed interest) with ages ranging from young children to mid-60's. There are close to 25 kids in the ages 2-18 range.

By planting the first PCA church in the area, the Blue Ridge Presbytery hopes to provide a presbyterian and reformed witness that will multiply throughout the region.

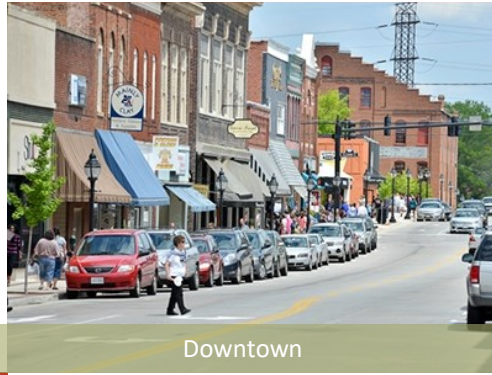
### Prince Edward County Religious Preferences

2010, city-data.com





High Bridge Trail State Park



Downtown



Longwood University

## Farmville Highlights

About 65 miles southwest of Richmond.

Home of Longwood University with 4,840 students, 70% female.

High Bridge Trail winds through the center of town.

Eleven parks offering canoeing, fishing, hiking, boating, and sports are within walking distance of most Farmville neighborhoods.

The Longwood Center for the Visual Arts is distinguished as the only collecting institution in the state with work by Virginia artists and artisans as its primary focus.

A center for the study of civil rights in education, The R.R. Moton Museum was the site of the 1951 student walk-out to protest the separate but unequal conditions of the public schools.

Non-manufacturing major employers include:  
 Longwood University  
 Hampden-Sydney College  
 Green Front Furniture  
 The Woodland Inc.  
 Centra Health & Centra PACE  
 Crossroad Services Board  
 Trinity Mission of Farmville

## Education

(population over age 25)

86% High School Grad or higher

15% Bachelor's Degree

12% Graduate or Professional Degree

## Candidate Strengths

- Vibrant walk with Jesus that leads to a love for the lost
- Highly relational networker who is intentional in evangelism
- Highly incarnational with heavy involvement in the schools, civic organizations, recreational activities
- A leader who will love the greater Farmville area

## Support

- Solid financial support from the core group, as well as ongoing commitments from surrounding PCA churches and the planting Presbytery. The group has been giving to a fund started by Presbytery for the plant and has accumulated a significant amount in it.

## Imagine

A winsome and gospel-centered church plant in Farmville centered on evangelism, discipleship and a heart to see its community flourish

A missional church plant partnering with other PCA churches to see new churches planted in surrounding communities

Contact: Tim Frost  
[tim@cov-pres.org](mailto:tim@cov-pres.org)

## Most Common Occupations

